

# Parklife

**MORE NEWS INSIDE...**

**November 2023**

Howbery Business Park - Wallingford



**CROWMARSH CLASS  
MESMERISED BY  
BEAUTY OF BEES**



NOVEMBER 2023

# Parklife

5 Hedgehog focus year complete »



9 Flag flies in support of UN SDGs »



10-11 Enchanting clearing hosts forest school »



15 Dogs get agile on Manor lawn »



20 Be Flood Smart launches in new building »



**In this issue:** 3 Donna's intro 4 Christmas lunches at the Manor Café / Mark Baxter retires 6-7 Nurture team changes while plants go crazy 7 Hans leads team at Nurture 8 Provisional 2024 Nurture events 11 Biodiversity walk explored how to support nature 12 Bees' Needs Award recognises pollinator work 13 Crowmarsh class mesmerised by beauty of bees 14 Success of family tree trail continues 14 Solar park breaks record in June 15 HPSSA Climbing Club reaches new summits 16 HR consultant moves office from garden studio to Manor House 17 Buoyant geoscience consultancy opens office at Howbery 18 Style Acre's Santa Dash returns amid a packed programme 19 Kentech celebrates its 40th 21 School visits HR Wallingford for International Women in Engineering Day



# Looking forward

Howbery will be turning 30 next year and we're starting to think about how we can mark our anniversary, probably in early June. We're hoping to get as many people involved as possible, so please do keep an eye out for plans.



We're also currently discussing with Nurture Landscapes a schedule for their workshops and talks for next year. The provisional list is on p8. We're trying to put together a schedule that brings the community together and fits with our biodiversity goals.

Alongside this schedule, we're hoping to set up a regular BeeWalk – with data submitted to the Bumblebee Conservation Trust. Volunteer BeeWalkers walk a fixed monitoring route (a transect) once a month between March and October inclusive, noting each bumblebee species seen. As well as contributing to BCT data, taking part will also give us a measure of bumblebees in our grounds, which allows us to see the impact of our initiatives for bees as part of our biodiversity programme.

We're excited to have a new Forest School area in our grounds – see p10. It's a great opportunity for us to support children's wellbeing through the power of

nature, and fits perfectly with our sustainable and environmental ethos. We've also run two more family tree trail weeks on site this year and hosted a class from Crowmarsh Gifford Primary School to learn about trees and our bees.

There have been changes in people around Howbery in recent months. Mark Baxter, our operations manager who oversaw catering, retired earlier this year. Alison Mitchell has taken on more responsibility in the café and is doing a sterling job there. At the end of October, HR Wallingford's CEO Bruce Tomlinson, who oversaw Howbery operations, stepped down and as an interim measure Howbery is being spearheaded by director Andy Brown.

We also have a new Nurture Landscapes apprentice Tom and contracts manager Hans. More on p6.

Finally, if you haven't had chance to reply to our tenant survey yet, we'd appreciate your response. It's open until 17th November.

## Office space available

We currently have some offices available to let.

Check out our website or contact Estate Manager Donna Bowles.

<https://howberypark.com/space-availability>

## New tenants

A warm welcome to our new tenants:

**Jane Fryatt**

**Dr Casey**

**Bloomfield Care**

# Book your Christmas lunch at the Manor Café

The Manor Café will be hosting Christmas lunches on Thursday 7th and Tuesday 12th December. The team will be offering a three-course menu on each day:

## Thursday 7th December

**Starter** – Wild mushroom velouté (£5.75)

**Main** – Roast turkey breast and all the trimmings (£9.95)

**Main** – Butternut squash, chestnut mushroom, Wensleydale and cranberry tart (v) (£9.95)

**Dessert** – Homemade sticky toffee Christmas pudding (£5.00)

**Dessert** – Trio of desserts (Lemon posset, chocolate orange delice, and a white and dark chocolate mousse (£5.75))

**Booking required by 17th November – pick up a booking form from the Manor Café.  
£10 non-refundable deposit required per guest.**



## Tuesday 12th December

**Starter** – Spiced honey parsnip soup (£5.75)

**Main** – Roast turkey breast and all the trimmings (£9.95)

**Main** – Beetroot wellington (v) (£9.95)

**Dessert** – Homemade sticky toffee Christmas pudding (£5.00)

**Dessert** – Trio of desserts (Lemon posset, chocolate orange delice, and a white and dark chocolate mousse (£5.75))

# Mark Baxter retires from Howbery Park

Mark Baxter, a familiar face in the Manor Café, which he ran as part of his role as Operations Manager, retired in May after 16 years at Howbery Park. Our thanks and best wishes to Mark who worked tirelessly to make the cafe and park what it is today.



Mark Baxter.





# Hedgehog year completed for biodiversity award

In recognition of completing a year of initiatives to help hedgehogs, Howbery Park received another inscription – the British Hedgehog Preservation Society (BHPS) – on our biodiversity award. This takes us to the half way point in the six-year Nurture Biodiversity Scheme, having supported birds and bumblebees in the first two years. We have now moved to focusing on insects.

In looking to support hedgehogs, we met criteria set out by Nurture Landscapes and the BHPS. Our initiatives included installing new hedgehog houses, checking there were corridors through the park for the creatures to move, and improving food supplies. As beetles and other insects are an important food source for hedgehogs, we ensured they had plenty of suitable habitats, by stacking logs vertically, rather than horizontally.

Trail cameras have showed that hedgehogs have been hibernating in some of the new homes over last winter. We have moved the houses that the hedgehogs haven't used yet to more secluded areas on the park.

We also joined the BHPS and followed its advice, for example adding stickers to strimmers to remind gardeners to check for hedgehogs before using them. As the scheme also required Howbery to help raise the profile of the prickly creatures, the park hosted a lunchtime talk about them for the local community.



The latest inscription on the biodiversity award with (from left) Nurture's Hans, Dave and Simon, and Howbery's Donna.

"We will continue to monitor hedgehog house use," said Estates Manager Donna Bowles. "While our focus has now switched to insects for our fourth year on the scheme, that doesn't mean we will suddenly stop supporting hedgehogs – the focus year is just the starting point for ongoing work. Also, by trying to increase diversity and numbers of insects, we will of course be providing more food for hedgehogs."





# Nurture team changes while plants go crazy

Our Nurture team has been busy over the summer with routine work interspersed by interesting environmental activities. Contracts manager Hans Heilgendorff, who replaced Robin Sergi as our contracts manager in March, explains.

Summer 2023 started with an exceptionally wet April/May, with almost heat-wave conditions following hot on the trails of the disappearing storm clouds. This summer has been unprecedented with moist ground conditions and hot weather making everything grow like crazy, especially the weeds.

The grounds team have been mowing, hedge trimming and weeding, weeding, and more weeding ever since. The routine work has been interspersed with some interesting happenings – a ‘spot-the-otter’ wildlife camera did indeed spot just that in the boathouse. Being a shy and elusive creature, just a few seconds of footage was captured. Bees swarmed, and were caught again, staying strong and productive until the early autumn with the loss of one swarm. From four down to three.



The grounds team: (from left) Pete, Tom and Ben.



A meet-the-bees activity was well attended by Crowmarsh Primary School, generating lots of interest in the hives. The same group did a tree walk, with children (and teachers) having a few ooh- & aah moments! Bird nesting boxes were installed during the previous winter, and an owl was spotted in one. If any keen birders end up seeing an occupied box of any description, please do tell us about it.



Owl spotted in box.

Additional bug hotels have been added, including a super tree condominium within an existing dead tree trunk in the wildlife area having numerous holes drilled into it, to attract a variety of wood boring beetles and solitary bees. This was done during August, and it appears already to be attracting some new tenants.

The steadfast flowering of different orchid species in the main meadow areas (pyramid, bee and white helleborine orchids) were a delight to see, and there's talk of creating new wildflower meadows in suitable spaces, to complement what's already there.

On the green front, we have received a brand-new orange ride-on mower. It's battery powered. As if that wasn't enough to keep the two groundsmen happy, they now have a new colleague in the form of Thomas Winch – an apprentice who lives just a few minutes away from the business park. Tom is a great addition for both Nuture and Howbery, in that he will be able to carry on at Howbery as a fully fledged (trained) team member, once the long-serving Peter Higgs starts his retirement in the early part of next year.

What about next year? Discussions are underway to look at some exciting and innovative ideas for various spots on site, keeping biodiversity at the absolute forefront of developments. Watch this space!

## Hans leads Nurture Landscapes at Howbery

Hans Heilgendorff is now our Nurture Landscapes contract manager, replacing Robin Sergi, who has moved within Nurture. Hans will be at Howbery once a week, liaising with our team of Ben, Pete and Tom who are permanently based on site.

Hans has a wealth of experience in horticulture and biodiversity, acquired in previous posts and through studying horticulture in Durban in South Africa 40 years ago. Plus, Hans' specialist interests are ornithology and wildlife photography.

As part of his role with the National Biodiversity Institute in South Africa, where he worked for 23 years, Hans was the curator of the Pretoria National Botanical Garden. He has also worked for the landscape construction industry in South Africa and then in the UK, moving here four years ago to be close to family. He joined Nurture Landscapes in March.



Hans.



# Provisional workshops and talks with Nurture Landscapes

All events are open to Howbery Park tenants, some are free while some have a fee to cover the cost of materials.

Some events will also be open to others in the wider, local community.

More details on dates and how to book your place will be available in the new year.

If you would like to receive information about events at Howbery, please register your interest at <https://howberypark.com/about-us/nature-environment/>

29 November 2023

## Christmas wreath-making workshop

2024

Late March

## Seed to plate workshop

A hands-on introduction to vegetable and herb growing by planting a selection of seeds in a propagator that you can take home.

Mid to late April

## Introduction to bumblebees talk

This will help equip you with all the information you need to participate in BeeWalks:

<https://www.bumblebeeconservation.org/beewalk/>.

April/May

## Hanging basket workshop

Early May

## Meet the bees workshop

With our expert beekeepers you'll get up close to our hives (bee suits provided).

Plus we'll be holding a **bee question-time** session with our experts to learn more about taking part in BeeWalks.

Early June

## Outdoor walk and talk in the park's grounds

An interactive round-up of biodiversity improvements being made in the grounds and the different habitats of the park.

**Gardeners' question-time** with our landscapes team.

Late June

## Insects walk and talk

To coincide with Insect Week take a walk in the grounds to find out more about these fascinating creatures.

July/August

## Butterfly walk and talk

An insight into the different species and their habitats on the park.

September

## Honey extraction workshop

Find out how to remove raw honey from the comb and follow the process through to placing the honey in a jar.

October

## Winter hanging baskets workshop

November/December

## Christmas wreath-making workshop



October 2023 honey extraction workshop.



# Flag flies in support of UN SDGs

Howbery Park joined hundreds of other organisations worldwide when it raised the SDG flag on 25 September, next to the Manor House, to show support for, and spread awareness of, the UN Sustainable Development Goals (SDGs).

Howbery Business Park, along with the HR Wallingford Group of which it is part, is committed to integrating the SDGs into its operations.

HR Wallingford has set out an ambitious sustainability programme designed to deliver its vision to lead innovation in sustainable solutions that transform how we live and work with water by 2030. It is already using the SDGs extensively as part of its sustainability programme to:

- better understand how products and services can contribute positively to sustainable development, both now and increasingly in the future.
- improve the way we do business.

Over the coming years HR Wallingford aims to manage innovation, develop people, create operational excellence and build the solid foundations needed so that it operates in a sustainable way and creates a positive impact.

The SDGs reflect a shared objective to end poverty and hunger everywhere, to combat inequalities within and among countries, to build peaceful, just, and inclusive societies, to protect human rights and promote gender equality of women and girls, and to ensure the lasting protection of the planet and its natural resources by 2030.



Flag flies near Manor House.

The SDG flag with (from left) Estates Manager Donna Bowles, Technical Services Manager Paul Middleton and Former HR Wallingford CEO Bruce Tomlinson.

As part of its ongoing focus on sustainability, HR Wallingford signed up to the UN Global Compact in September to facilitate implementation of the UN SDGs.





# Enchanting clearing hosts forest school activities

A woodland clearing in the Howbery grounds has been transformed into an enchanting space for children to play and learn in the great outdoors.

With requests for a forest school space coming from Puddleduck Nursery and Wild Wood Warriors in the same fortnight, it made sense to join forces on the project to create an area where young minds could enjoy and learn about nature. The Howbery team was delighted to support the project, given that nature is so important for children's wellbeing and that the park has a sustainable ethos and community focus. Plus, the café is enjoying welcoming families after forest school for a hot chocolate and cake.

## **Puddleduck Nursery**

Spending time exploring outdoors has always been a big part of our ethos here at Puddleduck Nursery. We have always taken the children on walks around Howbery's beautiful grounds.

Our vision for forest school is to provide a fun and exciting place for children to play and learn about the environment. To give children time and space to explore nature, build confidence and independence and be at peace in nature.

At the beginning of October we invited our parents to a twilight Forest School session to show them some of the exciting adventures their children have been experiencing. The evening was well attended with over 30 families braving the weather and the dark to see the wonderful Willows Site.





## Wild Wood Warriors

Former primary teacher Ruth Peters, who set up Wild Wood Warriors Forest School, is running 1.5 hour sessions for accompanied preschool and primary school children on Wednesdays and Fridays at Howbery. Children can choose from a range of activities, such as den building, blowing bubbles, mud kitchen and puppets, as well as having a healthy snack. She is also teaming up with the charity Style Acre, which has offices on our site.

"I believe in the transformative power of nature," explained Ruth, who completed her forest school qualifications in 2019. "After lockdown, it became even clearer to me how important outdoor learning is for children's mental and physical well-being. I already knew Howbery Park, as my husband is based here. The grounds have a wonderful feel to them and are a magical spot for outdoor learning."

One local mother who attended forest school with her son was very impressed: "The forest school is held in a magical setting close to the river, we have seen huge dragonflies, frogs and an abundance of insects."

<https://www.forestschool.co.uk>



## Biodiversity walk explored how to support nature

Howbery Park invited the local community to join a biodiversity walk around the grounds in July.

Guided by the knowledgeable and engaging Simon Blackley, The Nurture Landscapes Group Biodiversity Manager, visitors took a lunchtime wander through the park whilst Simon discussed the park's flora and fauna.

He pointed out interesting plants and their importance for insects, and explained how individuals can support wildlife in their own gardens.





# Bees' Needs Award recognises pollinator work

Howbery Park is buzzing to have received a Bees' Needs Champions Award from the Department for Environment, Food & Rural Affairs for our work supporting pollinators. The awards recognise and celebrate examples of exceptional initiatives undertaken by local authorities, community groups, farmers and businesses.

We began championing bumblebees in 2019 when we spent a year kickstarting measures to help them as part of our biodiversity programme. For each month while they were active, we noted which existing plants in our grounds the bees visited to help ensure they had a plentiful food supply. To plug gaps, we added a range of bee-friendly plants.

Since then we have continued to take initiatives to support bees in our grounds, including adding more wildflower patches, cutting the use of pesticide, introducing 'no mow May zones', and increasing areas that are not mown from 400m<sup>2</sup> to 920m<sup>2</sup>. In areas that are mown, we have begun to leave the grass longer, and mow less frequently.

As a result, we have for instance seen more clover flowering in our lawns – with bumblebees often observed upon it. We plan to gradually increase areas that are not mown, and continue with annual no mow zones and longer length grass cutting.

During the focus year and beyond, we have helped raise awareness of pollinators. We gained coverage in local publications and websites, and organised a free biodiversity talk for the local community. We also provided 'big 7' bumblebee species sheets to Puddleduck Nursery.



We also have four beehives in our grounds, which we introduced in 2016. We run regular activities for our park community – hive visits, and hands-on honey extraction – and introduced them to a group of school children in June this year.

More about Bees' Needs Awards at:

<https://www.gov.uk/government/publications/bees-needs/bees-needs-campaign>



# Crowmarsh class mesmerised by beauty of bees

A class from Crowmarsh Gifford CE Primary School was buzzing after meeting the Howbery Park honey bees and learning about trees in the park during a visit in the summer.

Having put on mini beekeeper suits, the children had the chance to get a close-up view of the honey bees from one of the four hives. Beekeeper Dave Taylor from Nurture Landscapes, which looks after Howbery's grounds, shared many interesting facts about honey bees and explained how the group could do their bit to support bees locally.

"The beekeeping activity was such a special time for our children and adults," said teacher Rebecca Fearn. "We were all mesmerised by their beauty and enjoyed hearing about the incredible work that they do. We all returned to school feeling so lucky to have got so close to the bees and the children have spoken lots within school and at home about it."

As well as meeting the bees, the children explored our tree trail with expert commentary from Hans Heilgendorff, also from Nurture Landscapes. The Crowmarsh class found the 11 notable trees on the trail, which are marked by plaques.

"Hans was incredibly knowledgeable," said Rebecca. "He shared lots of interesting facts and listened intently to the children who wanted to share their own knowledge and passions about trees."

Raising awareness of different flora and fauna is one of the aims of the biodiversity scheme that Howbery is signed up to, and inspiring youngsters to take an interest in nature fits perfectly with this goal.





## Solar park breaks record in June

Thanks to June's sunshine it was a record breaking month for Howbery Park's solar park with 124,095kWh of electricity generated. The month also saw 51.97% of our electricity on the park come from solar.

July's below average sunshine resulted in lower levels of electricity generated but August and September saw figures higher than their respective 2022 values.

In September the electricity generated from solar was 67,366kWh (beating 2022's value of 63,576kWh). During September 34.25% of the park's electricity came from solar.



## Success of our family tree trail continues

Following the success of the family tree trail event last year, we were pleased to welcome families back to Howbery again in 2023 to take a walk around the park.

We held events during the half-term holidays in May and October with special activity packs available. We had close to 150 children collecting their activity packs from the Manor Café and heading out to the park to find the trees and other areas of interest.

A new addition to the family tree trail this October was a clue hidden at the Forest School.

The tree trail covers eleven of our more notable trees on the park. Our standard Tree Trail map is available free of charge from the Manor Café.





## Dogs get agile on the Manor Lawn

Howbery Park Sports and Social Association (HPSSA) organised Hoopers classes for members and their dogs between March and October this year. Hoopers is low impact dog agility, using hoops, tunnels, and barrels – it is very simple for beginners and a lot of fun.

The classes were run by local instructor Carolanne Street from Happy Hoopaws. Up to six dogs attended the classes and all the dogs made great progress – it was the owners getting the courses wrong by the end of the season.

The classes will start again in spring 2024. If interested, email Jessica at [J.Carter@hrwallingford.com](mailto:J.Carter@hrwallingford.com)



## HPSSA Climbing Club reaches new summits

In just a year, the HPSSA Climbing Club has been steadily ascending to new peaks of success. The dedicated group of climbers has rapidly grown in both size and reputation, visiting the Climbing Hangar in Reading every Thursday night to showcase their fearlessness and camaraderie.

The club welcomes climbers of all levels of experience. The group varies weekly in size from 2 to 10 people, but their inclusive approach ensures that everyone gets a cheer and a fist-bump when reaching the top of the wall.

The club is not just climbing rocks, the new motto is 'Climb High, Climb Together', and encourages networking and making friends. We've had a 'Bouldering & Burgers' social, and an outdoor trip to Symonds Yat. We hope to organise more expeditions in the future including rope climbing sessions and a weekend trip to Fontainebleau.

If you fancy coming along, contact Ashley ([a.tuton@hrwallingford.com](mailto:a.tuton@hrwallingford.com)) or Tom ([t.clarke@hrwallingford.com](mailto:t.clarke@hrwallingford.com)). We meet in Kestrel House Reception at 5pm and lift share. Your first climb is free, with a HPSSA subsidy to those joining the club of £3 off either three climbing sessions or three consecutive months of membership at The Climbing Hanger.





# HR consultant moves office from garden studio to Manor House

Jane Fryatt, who set up her own HR consultancy in 2018 in her garden studio, has moved to an office in Howbery's Manor House.

Jane has been coming to Howbery since 2012 as all of her children have been to Puddleduck Nursery. After setting up her own business at home six years later, she often used the café for meetings and held workshops on site. This year, she decided it was time to take on an office here – to support a new member of staff with more office contact while avoiding building work at home.

"I've always liked the idea of an office at Howbery," explains Jane. "I love it here – I love the café and going for walks in the grounds. I used to be a big advocate of working from home, but now realise that there are a lot of distractions there."

"Everyone here at Howbery has always been so supportive. I'm delighted to be next to my accountant Gary Hamilton in the Manor House. I also know HR Wallingford's personnel team from when I worked at CABI in Wallingford."

As Jane used to be a HR manager for scientific companies, while her colleague Robyn's background is in creative organisations, their consultancy usually works for the science, tech, engineering and creative industries. They specialise in working with small businesses, and particularly enjoy helping new businesses take on their first employee.



Making the most of the grounds: (from left) Robyn, Jane and Khi.



# Buoyant geoscience consultancy opens office at Howbery

Ternan Energy, an independent marine geoscience consultancy, has taken an office at Howbery Park, making it easy for it to serve clients in southern and central Oxfordshire, London, and the southwest.

The new premises complement Ternan Energy's existing offices in Aberdeen, Chichester and Edinburgh. Plus Oxfordshire is a good area for recruiting a skilled workforce: not only are there many science-related and technical businesses based here, but several nearby universities offer courses in geological and geotechnical engineering.

Principal Geotechnical Engineer James Deacon was recruited locally to open the office. He has been joined by Mark Qiu who has recently completed a PhD in geotechnical engineering at the University of Oxford, and Richard Luker, an experienced geotechnical engineer. The Howbery office provides the space to grow and develop the team – they are looking to recruit more geotechnical engineers, geoscientists and geologists – as they expect strong demand for its services to continue. Its portfolio includes offshore wind developments, which are rapidly expanding to help meet net zero ambitions.

“When looking at possible sites for this office, I knew of Howbery Park already as we use the nursery here,” explained James. “The location is ideal for entertaining clients as it’s stunning with good transport links and meeting rooms, as well as being convenient for me. It’s also useful that Howbery has other businesses related to ours based here – plus the park and location offers a good life-work balance for the team.”

Donna Bowles, Howbery Park Estates Manager, added: “We’re pleased to welcome another business with a sustainable, renewable energy-related focus to Howbery Park – where we have a growing cluster of like-minded businesses. It’s so encouraging too to hear that businesses such as Ternan Energy are flourishing.”

<https://www.ternan-energy.com>



# Style Acre's Santa Dash returns amid a packed programme

It's been a very busy summer here at Style Acre, full of fun and activity. Now we're planning for the festive season.

People we support have gone on lots of holidays and day trips out, which has been wonderful to see. We have also been involved in lots of wonderful events and activities, including celebrations for the King's Coronation, Rokefest, Truck Festival and BunkFest. We also had over 40 people taking part in the Superhero Triathlon held at Dorney Lake in August. We had our best turnout ever and some amazing stories of personal achievement.

We are now planning for the festive season and the singing group have already started rehearsing for our Christmas Carol Service at St Mary's Church in Wallingford in December.

Tickets are also on sale for our Santa Dash in Wallingford on Sunday 3 December at 11.30am. We would love to see many of you there, joining us and hundreds of Santa lookalikes for this year's 3km jog/walk/run. The dash will start and finish in the marketplace and we are working with the council and other community and business groups to put on a full festive day in the town, including the Christmas lights switch-on. The Santa dash costs £10 for adults and £7.50 for children (5-15). We are selling Santa suits and medals separately.

To sign up, visit [www.styleacre.org.uk](http://www.styleacre.org.uk)







# Kentech celebrates its 40th

Kentech Instruments, based in our ISIS Innovation Centre, celebrated its 40th anniversary in October. Here, Tony Dymoke-Bradshaw, one of its four founders, gives a potted history of the company.

Kentech Instruments was set up by four of us – Jonathan Hares, John Westlake, and Joe Kilkenny and me – in 1983. As members of the plasma physic group in Imperial College, we were heavily involved with the Rutherford facility. Jonathan, with help from a few others developed the world's most compact x-ray streak camera. The Lawrence Livermore National Laboratory (LLNL) was keen to buy one, resulting in us setting up a spin-off company.

Our first employee was Paul Kellett in 1989 and within three years he was a director. He introduced us to Pete Rouse who worked with us for many years building mainly avalanche pulse generators. Many more people joined us over the years, while one of our founders, Joe, left to go the LLNL.

When we started out, Star Wars (the real one) was going and money, particularly in the USA, was flowing very freely. Whenever we came up with an idea, LLNL would buy one to see if it was any good – they were desperate for diagnostics.

In the early 1990s, the Soviet Union and the USA ended their Star Wars programmes, which led to money drying up. We had other customers but increasingly these were in life sciences and not used to throwing money at problems without guarantees.



Then Paul French from Imperial College turned up doing Fluorescence Life Time Imaging. We developed the high rate imager (HRI) to meet his needs, which also attracted a lot of interest from other groups. We signed up with LA Vision in Germany who sold the HRI worldwide. The HRI is the product we have sold most of – over 200 in about 20 years.

We moved to Howbery Park in January 2007 and celebrated our 40<sup>th</sup> with a boat trip and meal, which Paul French attended too.



# Be Flood Smart launches in new building

HR Wallingford supported the launch of the Be Flood Smart campaign in May at the BeFloodReady Property Flood Resilience Centre, the new building added between Howbery's Solar Park and the Froude Modelling Hall.

The BeFloodReady Property Flood Resilience Centre is the UK's first dedicated facility to deliver accredited training on the specification, installation and maintenance of Property Flood Resilience (PFR) measures. Funded by Defra, the centre will be used to upskill professionals from a wide range of industries.

The Be Flood Smart campaign encourages householders to adapt their homes with PFR measures to better protect against the impact of future flood. It is spearheaded by FloodRe, the joint initiative between the UK government and the insurance industry, and the Environment Agency.

According to FloodRe, homeowners are facing average costs of £32,000 to fix flood damage as flood risk in the UK grows, plus significant emotional and physical costs and huge disruption. Yet flood awareness and resilience among property owners remains low.

The launch featured HR Wallingford's Emma Brown, an expert in flood modelling, who highlighted that climate change means flooding will affect ever more households and businesses.

She also showcased our work in Northamptonshire, which uses sophisticated computer modelling to identify properties at risk from flooding, and calculates the cost benefit of installing flood products. Emma revealed that indicative results from the study suggested that for every £1 spent, property owners will save £6 in potential flood damage.

Installing PFR products can reduce the risk of flood damage to individual homes, speed up repair work, and help people move back into their properties quicker after a flood.

Measures can include raising electrical sockets and white goods away from floor level, installing self-closing air bricks and flood resistant doors and replacing flooring with waterproof tiling and grout.







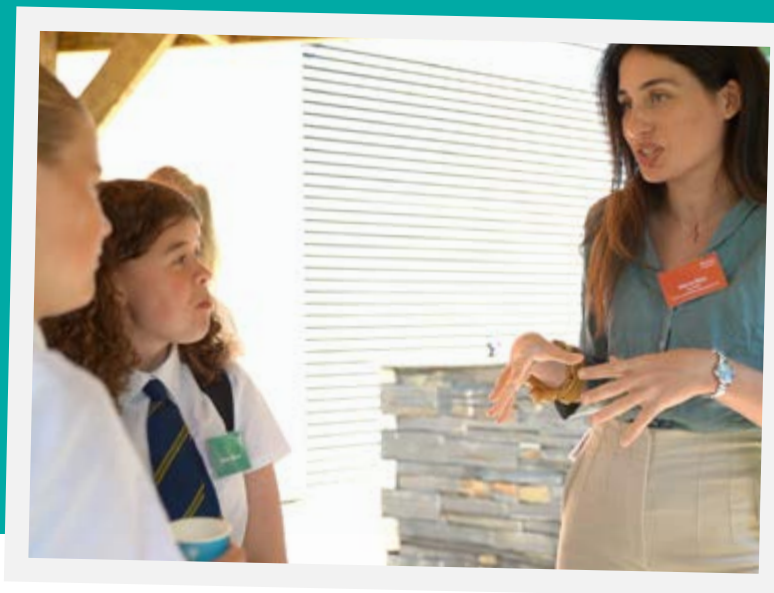
# School visits HR Wallingford for International Women in Engineering Day

For International Women in Engineering Day 2023 we invited around 30 girls from Wallingford School to meet HR Wallingford's inspirational women and tour our state-of-the-art facilities.

According to the Women's Engineering Society, only 16.5% of engineers in the UK are female. We were aiming to change that by helping girls understand the profession as they choose the subjects they will study in the future.

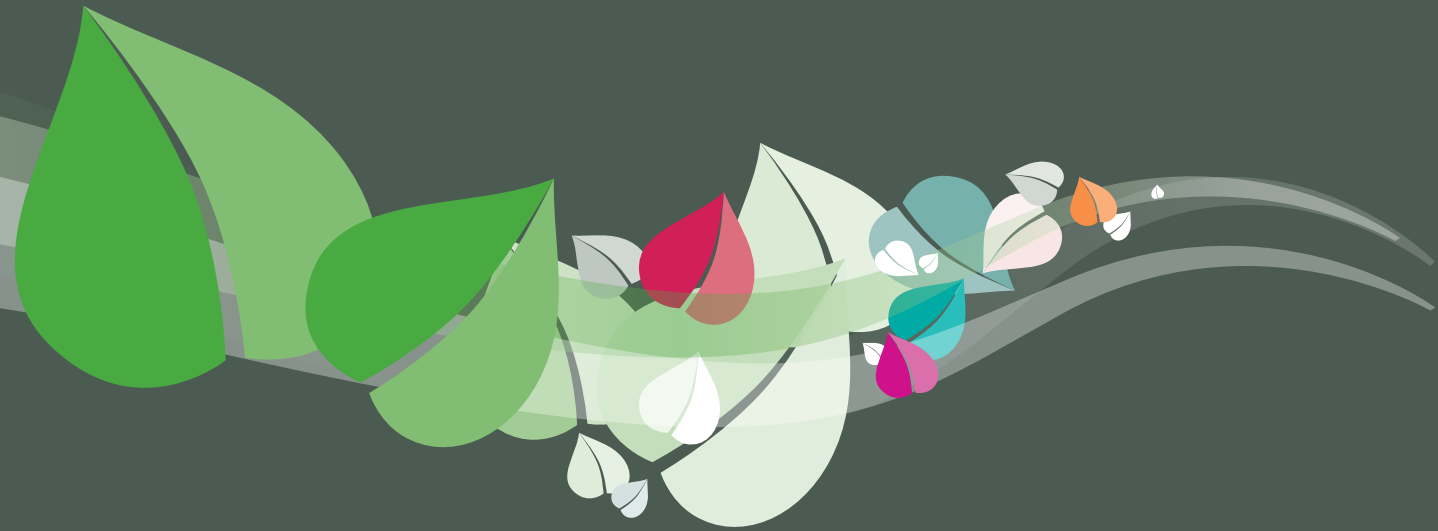
What a day we had! It was a pleasure to meet the girls and the teaching staff from Wallingford School, and our people all came away feeling inspired and energised. We also hope the girls now have a much better idea about: being an engineer; how engineering can help create a more sustainable world; and how they could go about becoming one.

The day started with a keynote speech from Amelia Couldrey, who gave them an introduction to HR Wallingford and explained her career journey.



They then toured our modelling hall and had a go in one of our UK ship simulators, as well as having a classroom session on the life and work of an engineer. To finish, we had an informal opportunity to meet 20 of our people, where the girls could chat and ask questions.

We made a short film about the day, featuring many of the girls we met, who share their experiences of the day and what it meant to them. It can be watched at: <https://www.hrwallingford.com/news/wallingford-school-visit-international-women-engineering-day>



# News... News... News

## A Note From The Editor:



Keep us posted – to include your news and stories in Parklife, please email them to me, Donna Bowles [d.bowles@howberypark.com](mailto:d.bowles@howberypark.com)