

Parklife

THE SECRET LIFE OF HOWBERY PARK'S TREES

MORE NEWS INSIDE...

May 2019

Howbery Business Park - Wallingford

MAY 2019

Parklife



3 The secret life of Howbery Park's trees ➤



6 10 years at Howbery Park ➤



10 Celebrate with us ➤



17 Miramar's fantastic fundraising ➤



14 Space suits us! ➤



In this issue: **3** The secret life of Howbery Park's trees **4/5** Awards success **6** 10 years at Howbery Park **7** Power on the park **10/11** Celebrate with us **12** A certified success **17** Miramar's fantastic fundraising **14** Space suits us! / Beds for bugs **15** News and events **19** Snow day! / Wallingford Town under 19 team

The secret life of Howbery Park's trees

We have produced a new video so you can take a virtual tour of the park with Hugo Loudon from Heritage Tree Services, and discover fascinating facts about the park's trees.

We are very proud of our mature parkland, home to many unique trees from all around the world, some of them planted in the Victorian era when Howbery Park's Manor House was a family home.

It's thanks to Hugo, and to the team at Nurture Landscapes, that we are able to take care of our trees and green spaces so well.

Find the video on Howbery Park's YouTube channel at <https://youtu.be/R-FDaYnDr-s>



Awards success

Howbery Park is the South & Vale's Business Space of the Year!

(From left) Graham Leeming, Mark Baxter, Donna Bowles and Susan Bouffler with Cllr Jane Murphy, Leader of South Oxfordshire District Council



Howbery Park was proud to be named Business Space of the Year at an awards ceremony for the South and Vale Business Awards held at the Williams F1 Conference Centre in Grove on Friday 15 March 2019.

The event, which was hosted by Luke Smith from Heart's Drivetime, is the first time both South Oxfordshire and Vale of White Horse District Councils have held the joint awards.

It was really satisfying to learn that the judges selected Howbery Park for the Business Space of the Year award because of the park's environmental initiatives, and the activities we run which encourage a community feel to the park.

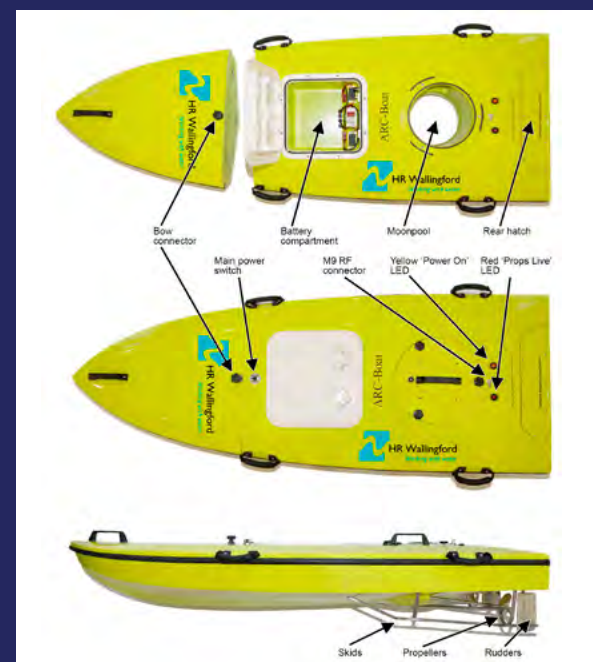


HR Wallingford's ARC-Boat innovation

HR Wallingford received the Established Innovation Award for its expertise and innovation in flood and water management, and for its development of the cutting-edge ARC-Boat survey vessel.



Peter Watchorn and Simon Tiedemann receiving the Established Innovation Award at the Williams F1 Conference Centre



Continued...

Event Tech recognition

Park tenants, Jonas Event Technology, are on the shortlist for Technology Service Supplier of the Year. The Association of Event Organisers Excellence Awards are coming up in June.

Jonas Event Technology were also selected as a finalist in the hotly-contested SME of the Year category for South Oxfordshire.



Business Park Manager of the Year!

On April 11th at Keble College Donna Bowles was announced winner of the Business Park Manager of the year at the Oxford Property festival.





10 years at Howbery Park

I started working at Howbery Park on 2 February 2009 as Office Manager for HPE, and in July 2013 I took on the role of Estates Manager for the site.

Before working at Howbery Park I was the Facilities Manager for the Pier, located at Milton Park. I liked Milton Park, with its green credentials, shops, cafe, restaurants and trim trails, and had thought it was going to be a hard environment to beat.

But Howbery Park has definitely got the 'wow' factor. It has so much to offer for a brilliant work-life balance. Taking a walk around the park is inspiring and I really enjoy meeting and talking to the people on site making it an amazing place to work. We have such a diverse bunch of tenants and that helps to create the park's amazing community feel.

It is a pleasure working with our grounds company, Nurture Landscapes. Not only do they keep the grounds looking their best, they have also helped us to run a range of different workshops, helping to bring the community together. It has been wonderful to be involved with introducing the bee hives, the allotments and the car charging points, to name just a few of the many projects that help enhance the park's soul. A real highlight was in May 2017 when we won

Business Park of the year for the Thames Valley area. We were so proud to receive this award bringing recognition for the park.

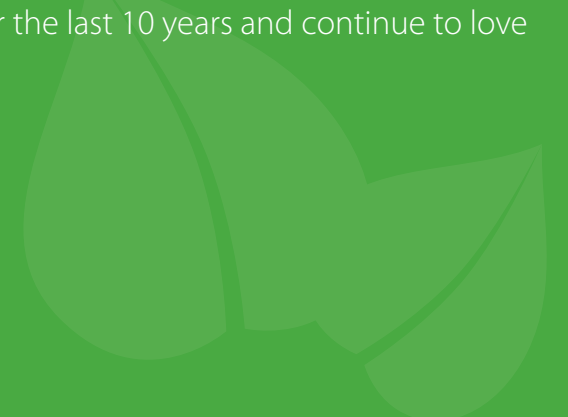
I am so lucky to work with such a fantastic team of people, in all of the areas that help to make this site the place it is.

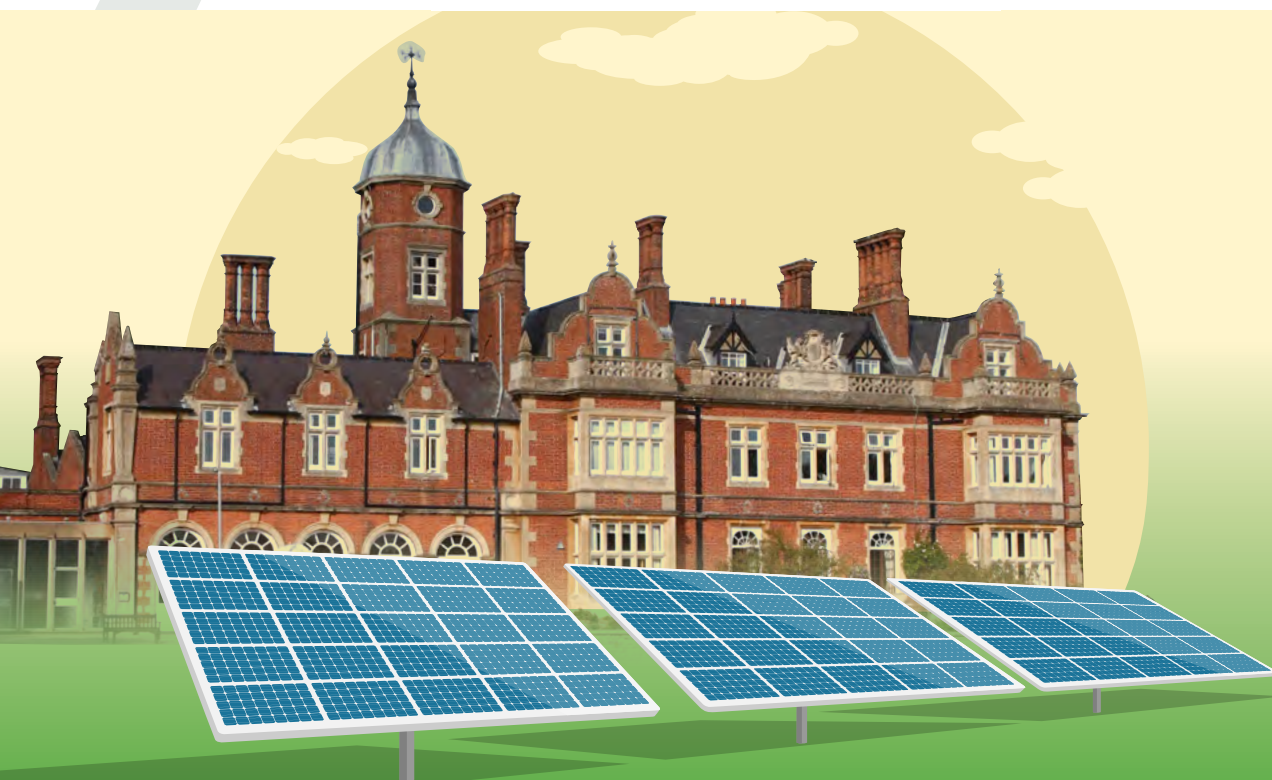
I am very much looking forward to the next exciting phase, further working on the development plan for the park with Graham and the team.

2019 marks the 25th anniversary of Howbery Park, and we have chosen 6 June as the celebratory day, so please join us if you can!

These are just a few of the reasons I have worked at Howbery Park for the last 10 years and continue to love my job.

Donna Bowles





Power on the park

Total generated electricity in 2018:

767,838kWh

(enough to power 199 semi-detached houses/year or 276 Mid terrace houses/year)

Total exported electricity in 2018:

83,801kWh

Carbon saving 345,004kgCO₂

Every home is different!

But the average semi-detached house uses

3,847kWh/year

Mid terrace house uses an average of

2,779kWh/year

2018 was the our 2nd best year for generating electricity just behind 2013 which produced

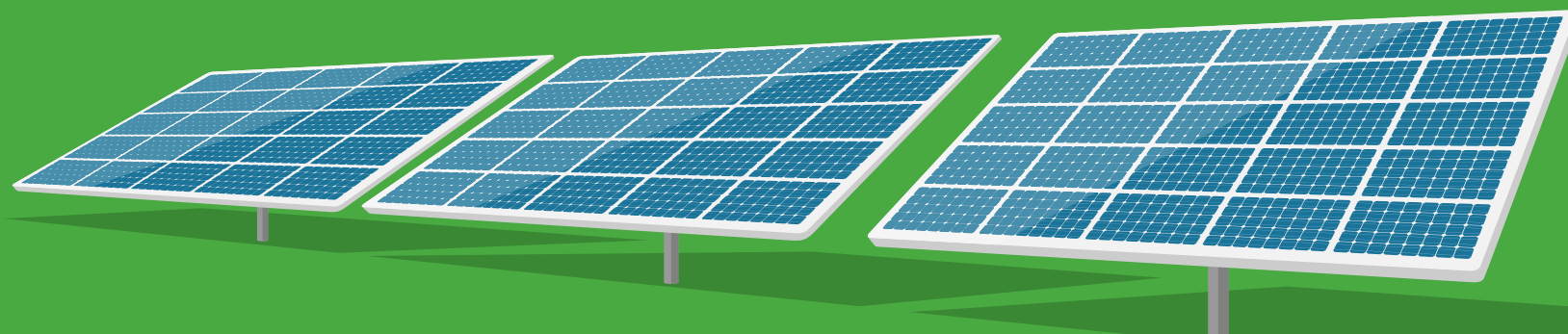
775,370kWh of electricity

It was also the 5th best year for exporting back to the National Grid with

83,801kWh,

with 2014 taking 1st place with

104,820kWh



News from HR Wallingford

In February, HR Wallingford hosted a visit for Marine Geographers from the School of Earth and Ocean Sciences at the University of Cardiff.

Presentations given by our current Industrial Placement Students, Lenford and Miranda, provided a real insight into what it's really like to take a coastal structures industrial placement at HR Wallingford. The visit also included a tour of our physical modelling hall to see our latest coastal engineering projects such as the San Antonio Outer Port Model.

What makes this model for the 'Puerto de Gran Escala' in Chile particularly impressive is its size. San Antonio's breakwater is the largest we have ever built, and we hand-placed some 25,000 model scale armour units on top of 19 tonnes of rock units to create it! At a scale of 1:100 the model fills our largest 75 m by 32 m wave basin, and took 370 hours to build. We use our own wave paddle systems to generate the complex waves in the physical model which needs to accurately replicate complex wave fields to be able to assess the effectiveness of the breakwater's design. You can see a drone fly over of this mega model on HR Wallingford's YouTube channel. <https://youtu.be/Gys4K01s3oM>

We also had a successful field trip to the South Coast in February with students from the BSc in Flood and Coastal Engineering degree programme at Brunel University, London. HR Wallingford is working in partnership with The Environment Agency, Brunel University and other partners to help develop the skills of a new generation of specialists in flood and coastal engineering. Our involvement includes academic teaching at Brunel and summer schools at HR Wallingford.

Continued...



In March we took part in the Big Bang Fair at the NEC in Birmingham. Scientists, Aodh n and Jane from HR Wallingford's Flood & Water Management Group, manned the sand box on a stand shared with the Environment Agency, Brunel University and The Chartered Institution of Water and Environmental Management (CIWEM). Young visitors found out about the work of a flood engineer, and learned more about the challenges of flooding, getting hands-on with urban, river and coastal models.



In research news, within our research programme, HR Wallingford is putting together a research proposal which aims to understand the true scale of the plastic influence on aquatic systems. The interaction of plastics with the water environment now poses a real risk to aquatic species, to habitats and to the food chain, as well as impacting upon coastal communities and their economies.

Partners working with us on the new research proposal include the University of Hull, the National Oceanography Centre (NOC), British Antarctic Survey, the Centre for Ecology and Hydrology (CEH), the Environment Agency and the University of Southampton.

The aim of the research is to identify the pathways that plastic takes along its journey from land sources through rivers to estuaries, coasts, coastal oceans and into the deep sea. The project will start with the River Thames as many organisations are already starting to work together to address the problems of plastic waste within the river.

10

Celebrate with us!



We are looking forward to seeing you at our official celebration which takes place on Thursday 6 June at 3.45 pm. Meet on the Manor House patio for a welcome speech and ceremonial cake cutting! Enjoy the sound of jazz on the lawns.

RSVP to join us for afternoon tea which will be served shortly after 4pm.

Join us from 4-6 June as we celebrate Howbery Park's 25th anniversary as a business park.

We would love all the park community to get involved by joining in with some of the special events we've got planned.

And we'll let you know how you can join in on social media too with some special props you can borrow!

We'll be emailing your company contacts with more information or call in to see us in the Estates Office.

#Howbery25years

Walk & Talk Tree Tour

You've seen the video, and now here's your chance to explore Howbery Park's treescape with Hugo Loudon in person. No booking required.

Meet at the Manor House.

Tuesday 4 June at 1pm



History of Howbery Talk

With local historian David Beasley.

Delve into the story of Howbery Park, the home of various noblemen and political figures during its fascinating history.

No booking required.

Thursday 6 June 1pm Conference Centre



Jazz on the Manor House lawns

With vocalist Fleur Stevenson & Pete Billington on keyboards.

Open to all.

Thursday 6 June From 3 – 5pm



Tours of the UK Ship Simulation Centre and Froude Modelling Hall

With HR Wallingford.

Please note that advance booking is required for these tours as numbers are limited.

Friday 7 June From 12-1pm





A certified success!

Certification company, HPI Verification Services, has expanded into larger office space at Howbery Business Park, Wallingford. The business, which has a 20 year trading history, moved to Howbery in 2010 when its current CEO bought the Certification Services Department of AEA Technology and rebranded it as HPI VS.

The company has a licence from the European Commission to issue CE certificates for recreational boats and yachts, and for different types of pressure equipment, providing its services to clients all over the world. Having a CE Marking on such products is required by law, but is also an essential marketing tool for manufacturers. It enables them to demonstrate that their products conform to EU Product Directives, allowing them access to the entire European market. Clients include Sunseeker Luxury Yachts, General Motors and Oxfordshire boat manufacturer, William Jet Tenders, based in Berinsfield.

Chief Executive, Alasdair Reay, said: "We've expanded year on year, with particular growth in the Far East. We now have clients on every continent, and partnerships with inspection organisations all over the world such as the American Bureau of Shipping. As well as growing at Howbery, we have opened a second office in Dublin this year to ensure our operations continue to run smoothly after Brexit. We've also recently developed Clearwater, a ratings system for evaluating the environmental performance of boats and yachts. This new standard is attracting a lot of interest from the boating industry, and we expect this to be another growth sector for the business."

To find out more about HPI Verification Services, visit: www.eucertification.com



HPI Verification Service's CEO, Alasdair Reay, and Business Manager, Jacquie Morgan, in their new office space at Howbery Business Park

Howbery Park welcomes Anderson Law

Anderson Law LLP has recently opened their new office in the Manor house, Howbery Business Park.

Anderson Law LLP are a leading intellectual property (IP) firm that provides specialist legal advice to both business and research communities.

The firm has been highly recommended by Chambers and Partners and IAM 1000 for several years as a leading firm in their field. They have particular expertise in advising clients across the sectors of: life sciences, universities and research, IT and telecoms, gaming and entertainment, NHS and healthcare, new business and SMEs and charities.

They advise on a wide range of commercial transactions, such as licensing and collaboration agreements; and pride themselves on providing high quality legal support with quick and efficient service.

To find out more, visit the website (<http://www.andlaw.eu/>) or contact Mark Anderson on 01865 858 878 (mark@andlaw.eu).



Sowing the seeds

Simon Elswood from Hankinson & Duckett has been busy sowing seeds for the allotment they have taken on site. We have 12 allotments that are allocated on a first-come, first-served basis annually - looking forward to watching them all grow!



Space suits us!

Nikita and Emma had a trip into space when the Space/Store came to site – they offered virtual moon tours and the chance to dress up as an astronaut. They also brought lots of interesting merchandise to buy.

**SPACE
/STORE**



Harwell Campus | Electron Building | Fermi Avenue | OX11 0QR
info@spacestore.co www.spacestore.co

Beds for bugs



Howbery Park can now boast the addition of a hotel to its business park facilities - a bug hotel in the shape of the park's name.

Made from 100% waste items handcrafted by the Nurture Landscapes' team on site:
Ben Nash and Peter Higgs.

It's been a labour of love on and off for over a year constructed in 'quieter moments' between grass cutting and leaf collecting.

We expect this hotel to reach full occupancy very soon!

And, of course, it's a great feature tucked into the woodland for any explorers to find.





News and Events from The Manor House Catering Team

Come and join us for our themed menu days where we do our best to provide a little something different for your taste buds:-



19-26 May
British sandwich
week – Daily
specials on the
sandwich bar

11th June
Chinese
Theme Day

July 4th
Independence Day
– American themed
BBQ, weather
permitting

Summer BBQs
throughout the
summer, when
the sun is shining



So why not make a date to join
us on these days?



Introducing our cup for life!

Are you thinking of switching to a reusable coffee cup to reduce your carbon footprint? Then you might like to get your hands on our new Howbery Park 'cup for life'.



We've chosen a sturdy 320ml cup with a screw-on sip lid, and added a 25th anniversary design.

It's a medium height cup to fit under our hot drinks machine so you can bring it with you and refill it again and again, reducing your usage of single use cups.

We are covering the cost of the cups, and are offering the first 250 cups on a first-come first-served basis in return for a suggested charitable donation of £2 to be split between this year's corporate charities: Maggie's Oxford and The British Heart Foundation.

It's also suitable for cold drinks, is dishwasher safe and recyclable at the end of its life.

Get yours from the Estates Office from Monday 3 June!



Anniversary Honey!

Limited edition! Lovingly prepared by the Howbery bees last season, our latest Howbery Honey jars have a special 25th anniversary label.

Each half pound jar (227g) costs £3.50 and will be on sale from the Estates Office from Monday 3 June.



Love to cycle!

Don't forget that site users at Howbery Park have complimentary access to the park's pool bikes, whether it's just to get around the park, for a lunchtime bike ride, or to cycle to and from the surrounding villages.

The bikes are available for use from 8.00 am to 4.30pm Monday to Friday.

To use one of the pool bikes, just contact the Howbery Park Helpdesk.



Love to re-cycle!

At Howbery Park we endeavour to recycle, recycle, recycle, so we are delighted to receive this latest certificate from Oxford Wood Recycling confirming that 100% of the wood waste generated on the park during 2018 was either re-used or recycled - that's all 23 tonnes!



Miramar's fantastic fundraising

Well done to Miramar who for Red Nose Day did a 24 hours bikeathon and raised £1,201 total.



Miramar love fundraising for good causes and organised a work 5 mile ramble and raised £765.



Walk around Wallingford

Why not take a walk into our lovely nearby market town and support the local shops, or book a place on our free taxi service for tenants which does a return trip into town on Friday lunchtimes?

Wallingford has plenty of independent shops to explore, alongside national chains.

The historic market place actually dates from Saxon times, and hosts four markets selling everything from fruit and vegetables to crafts and gifts.

Charter Market has been going since the 12th Century, and is held every Friday in the Market Place.



Free taxi Fridays

If you would like to book a free Friday trip into Wallingford call the Howbery Park Helpdesk on 822411 or email us at: howberyparkhelpdesk@hrwallingford.com.

Make sure you let us know by 11am on the Friday that you would like a place, and please do advise us if you change your mind.

Pick Up Times from outside Kestrel House are at midday and 1.00pm.

Return Times from the town centre are at 12.45 and 1.45pm.



A warm welcome to our new tenants

Anderson & Law LLP
Trenans Accountancy
Vespula Ltd

Grace & Gravity
Whitemark Mortgages

Snow day!

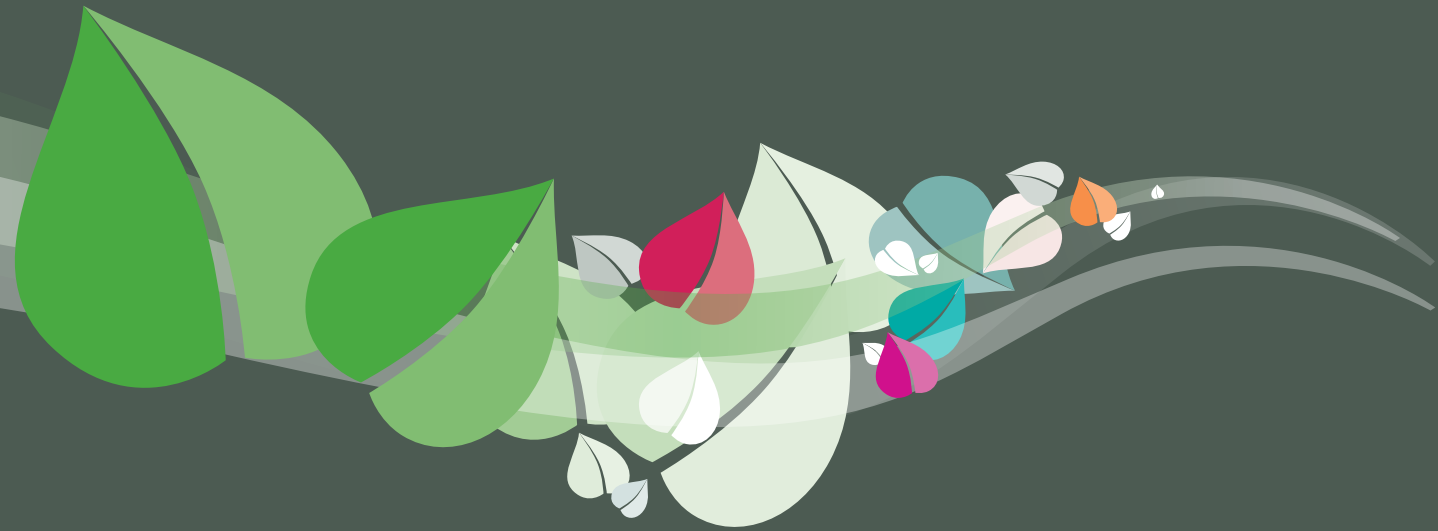
On 1st February some of our tenants got creative with the snow. Hankinson and Duckett made a Nessie and Tim O'Hare a snowman trying to take some soil samples!



We are proud to sponsor Wallingford Town U19 team...

The season to date has gone really well. This year we were able to enter the FA Youth Cup but had a tough 1st round draw away to Enfield Town on a Thursday night early in September in our 1st competitive game of the season. Although we lost 5 – 1 with a couple of late goals from Enfield who were the better side, the 5 – 1 score line did not reflect the game. Since then we have played 11 league/cup games plus 2 friendlies winning every game and we currently sit top of the League and are in the quarter finals of both the County and League Cups.





News... News... News

A Note From The Editor:



Keep us posted – to include your news and stories in Parklife, please email them to me, Donna Bowles d.bowles@howberypark.com

Designed and produced by The Imageworks
www.imageworks.co.uk

Howbery 
BUSINESS PARK - WALLINGFORD